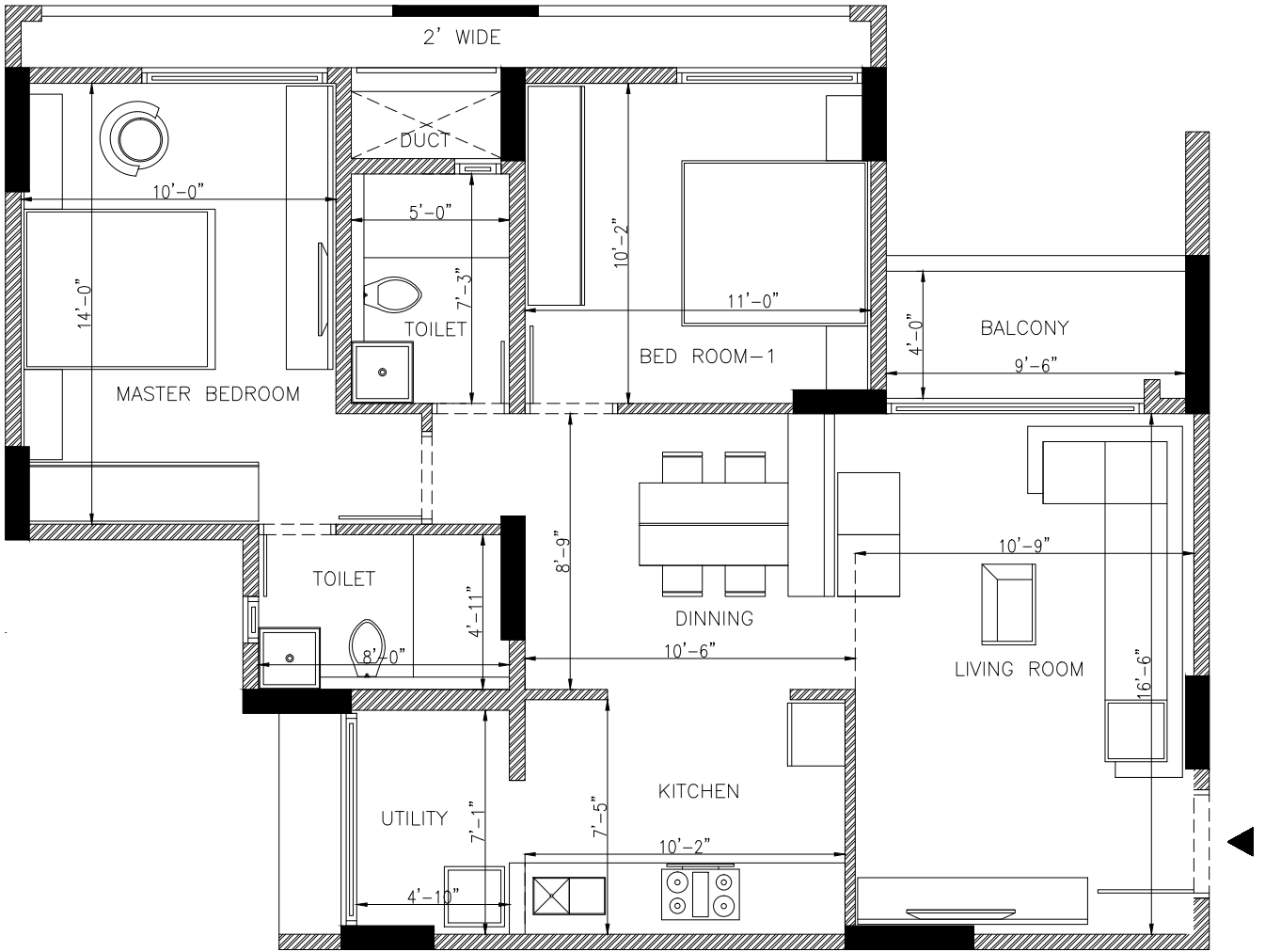


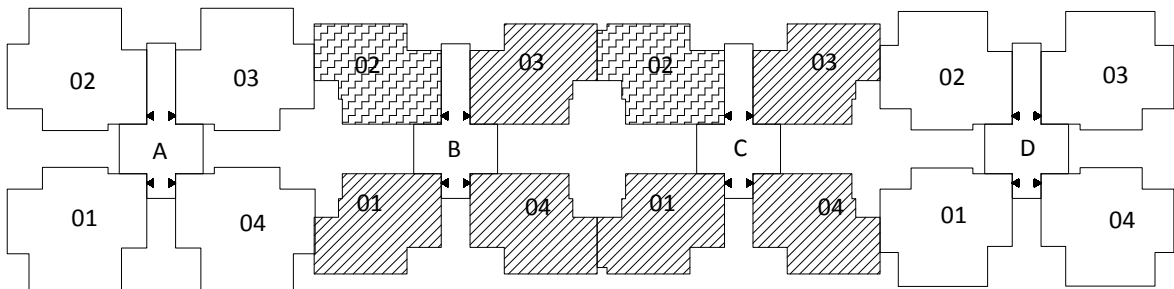
ORCHID GREENS



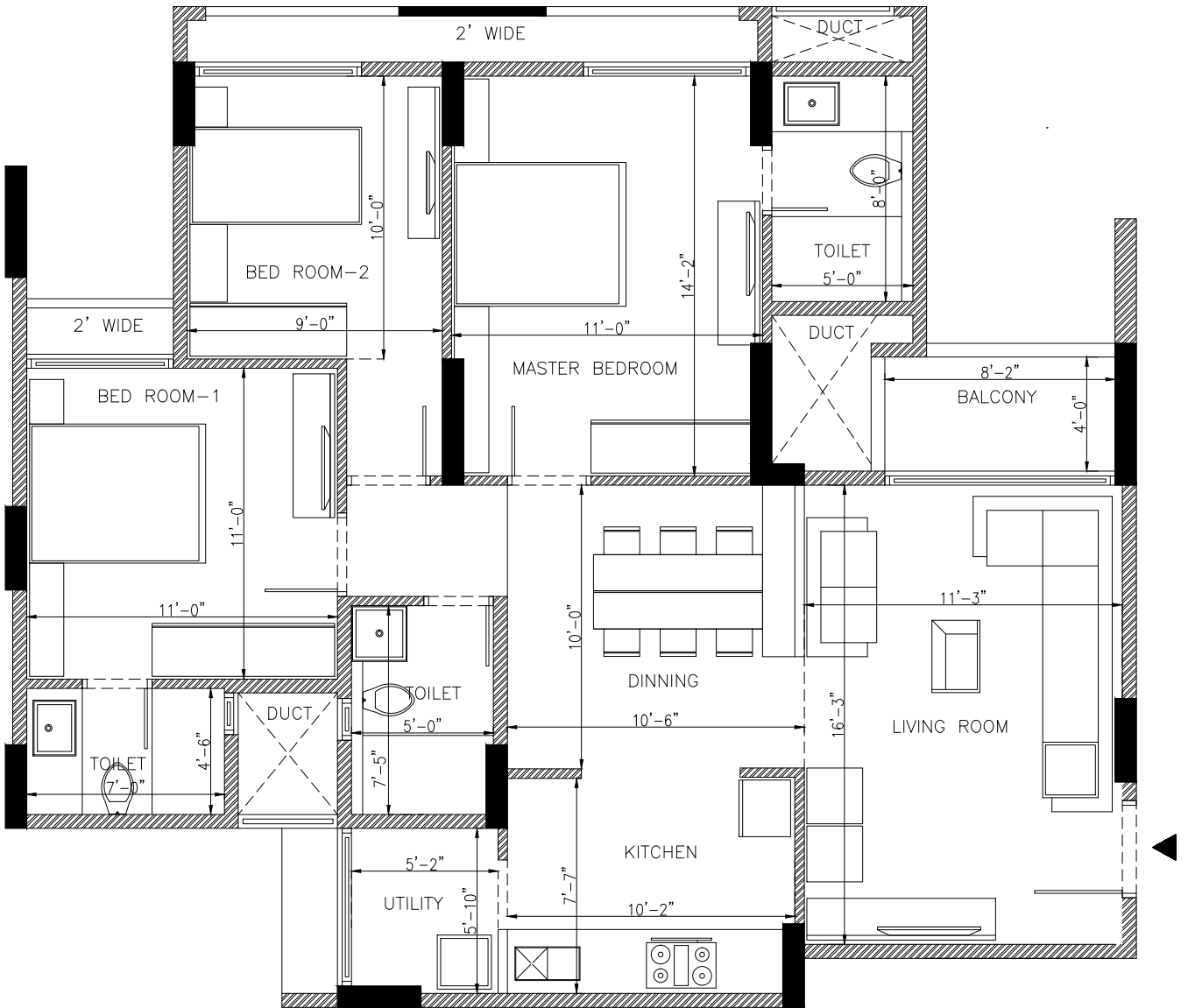
B -101 to 1301 , B -102 to 1302
 B -103 to 1303 , B -104 to 1304
 C -101 to 1301 , C -102 to 1302
 C -103 to 1303 , C -104 to 1304

CARPET AREA :	66.73 sqmt	718.28 sqft
BALCONY & UTILITY AREA :	6.77 sqmt	72.87 sqft
TYPE : 2 BHK		S.B.UP : 1180 sqft

NOTE : All measurements shown are on unfinished surface.



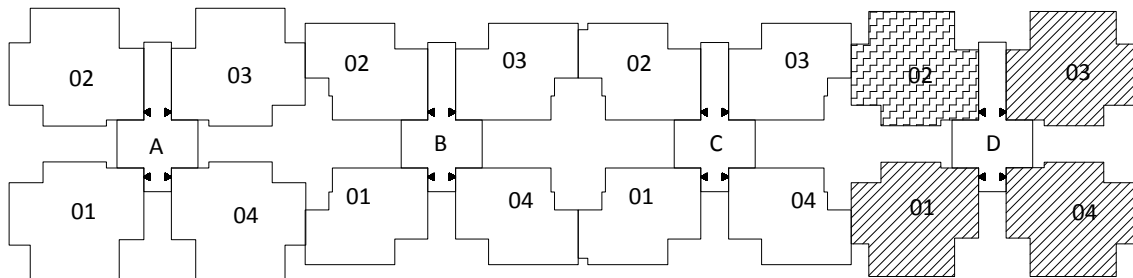
ORCHID GREENS



D - 101 to 1401 , D - 302 to 1402
D - 104 to 1404 , D -303 to 1403

CARPET AREA :	84.04 sqmt	904.60 sqft
BALCONY & UTILITY AREA :	5.86 sqmt	63.07 sqft
TYPE : 3 BHK		S.B.UP : 1450 sqft

NOTE : All measurements shown are on unfinished surface.

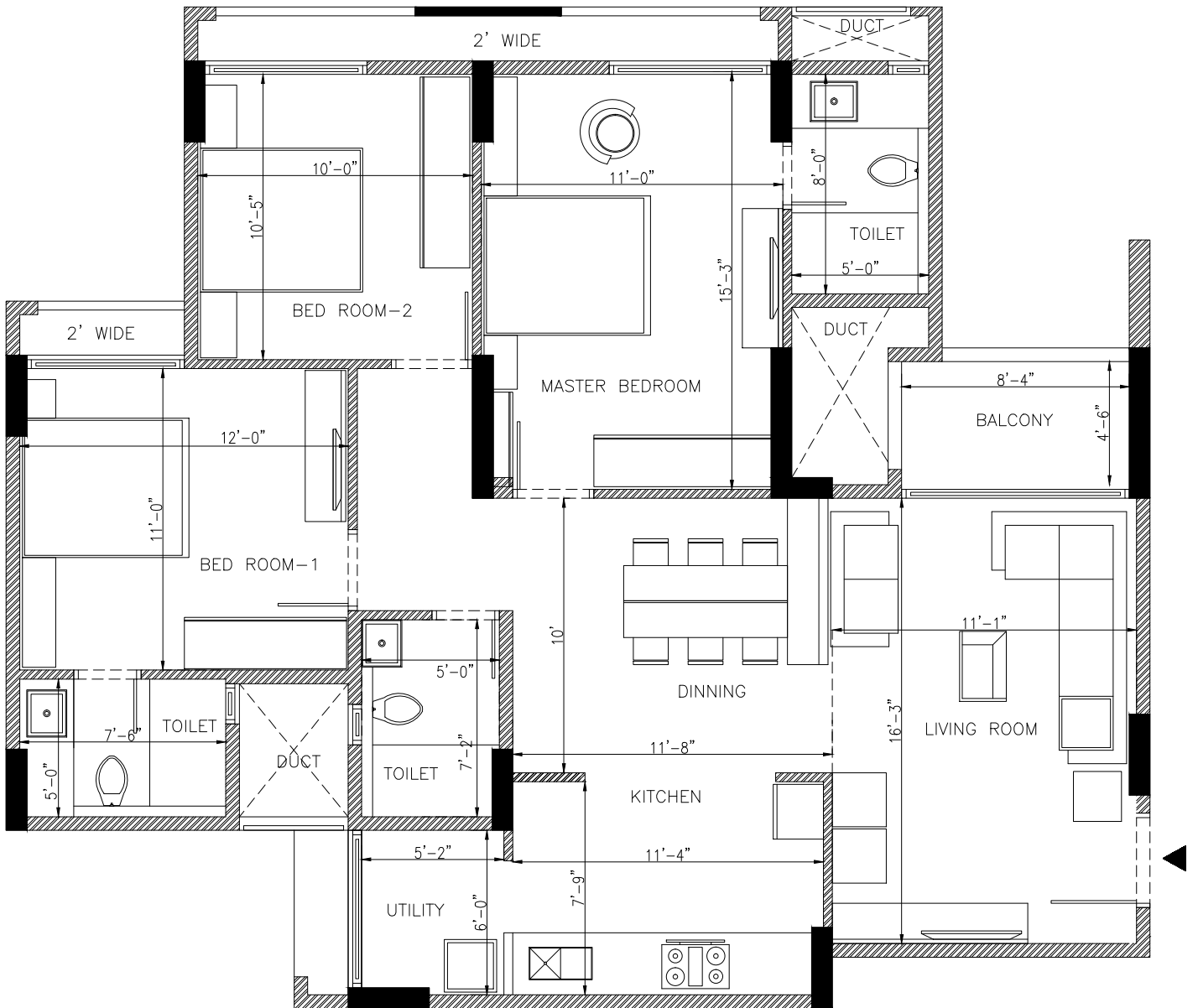


**Goyal
& Co.**



**HARIYANA
GROUP**

ORCHID GREENS



A -101 to 1401 , A -102 to 1402
 A -103 to 1403 , A -104 to 1404

CARPET AREA :	90.33 sqmt	972.31 sqft
BALCONY & UTILITY AREA :	6.35 sqmt	68.35 sqft
TYPE : 3BHK	S.B.UP : 1561 sqft	

NOTE : All measurements shown are on unfinished surface.

